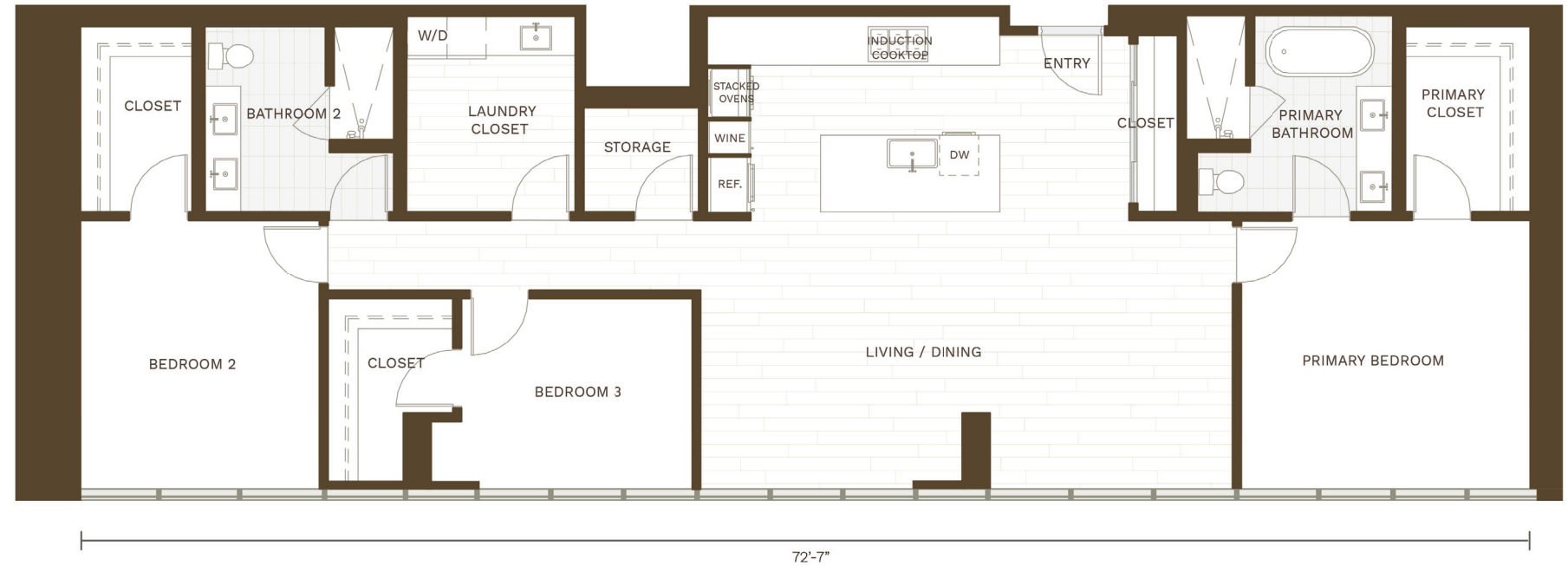
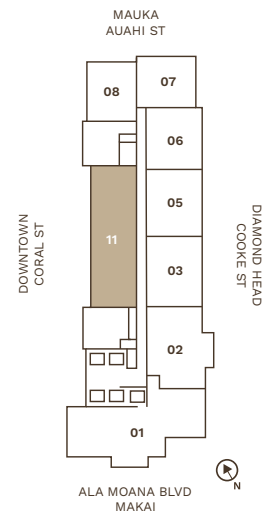
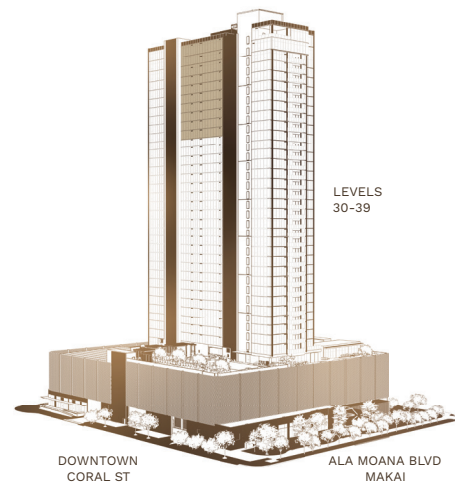


residence 11

DOWNTOWN
TYPE L
3 BEDROOMS / 2 BATHROOMS

TOTAL 1,662 sq ft / 154 m²



Kali'u Showroom 677 Ala Moana Boulevard, Suite 598 Honolulu, Hawai'i 96813 808.888.0598
Exclusive Project Broker: Heyer & Associates LLC, RB-17416 1288 Ala Moana Boulevard, Suite 108, Honolulu, Hawai'i 96814
www.kaliualamoana.com



DISCLAIMER KALI'U ("PROJECT") IS A PROPOSED CONDOMINIUM PROJECT THAT DOES NOT YET EXIST, AND THE DEVELOPMENT CONCEPTS THEREFOR CONTINUE TO EVOLVE AND ARE SUBJECT TO CHANGE WITHOUT NOTICE. ALL DESIGN, LAYOUT, FIGURES, FLOOR PLANS AND INFORMATION DEPICTED IN THIS FLOOR PLATE ARE ILLUSTRATIVE ONLY AND ARE PROVIDED TO ASSIST THE PURCHASER IN VISUALIZING THE UNITS AND THE PROJECT, MAY NOT BE ACCURATELY DEPICTED, AND ARE SUBJECT TO CHANGE AT ANY TIME.

WARNING: THE CALIFORNIA DEPARTMENT OF REAL ESTATE HAS NOT INSPECTED, EXAMINED, OR QUALIFIED THIS OFFERING. 🏠